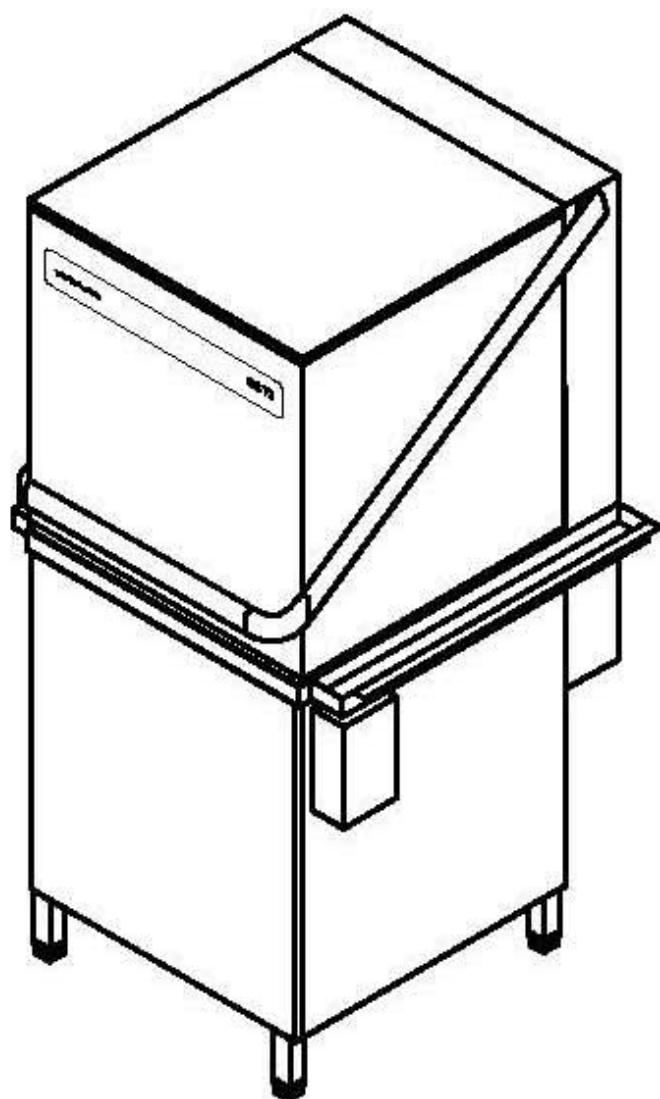


# winterhalter

## Spare parts list GS 72

Edited: 10/91  
Revised: 29.01.08  
Part-No.: 89000872



## Summary

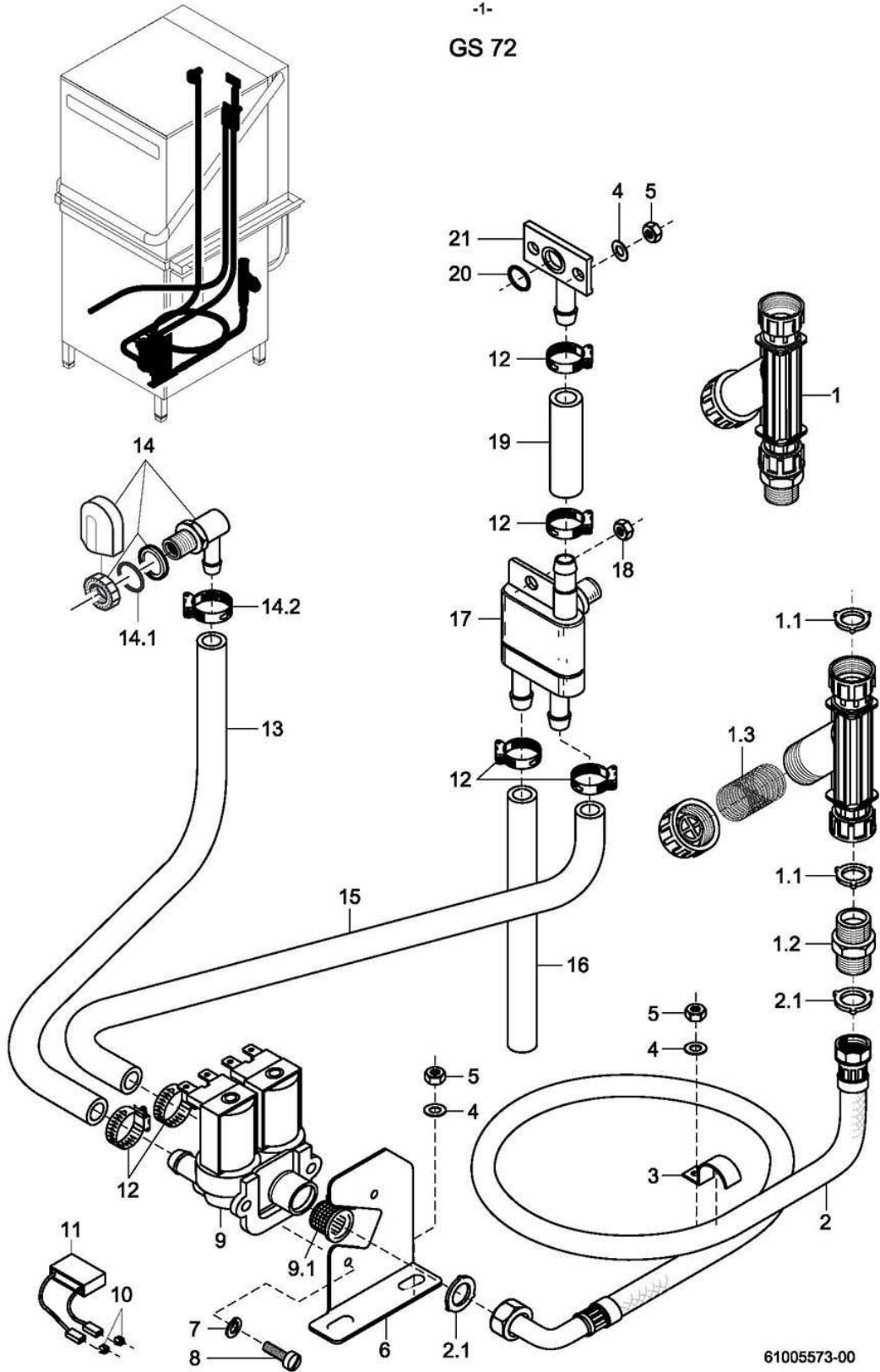
Water inlet	Page 1 and 2
Water inlet Tundish (Great Britain)	Page 3 and 4
Water drain, Mediamat and tank heating	Page 5 and 6
Wash system I (Mach.-no.: ⇒ 220 235)	Page 7 and 8
Wash system I (Mach.-no.: 220 236 ⇒)	Page 9 and 10
Wash system II	Page 11 and 12
Wash system III (Mach.-no.: ⇒ 182 618)	Page 13 and 14
Wash system III (Mach.-no.: 182 619 ⇒)	Page 15 and 16
Rinsing I	Page 17 and 18
Rinsing II - AquaMatik	Page 19 and 20
Rinsing III - Aquamatik	Page 21 and 22
Rinsing IV	Page 23 and 24
Dosing	Page 25 and 26
Hood and hood guide	Page 27 and 28
Container, rack guide and channels	Page 29 and 30
Panelling	Page 31 and 32
Electrical parts I	Page 33 and 34
Electrical parts II	Page 35 and 36
Electrical parts III (Mach.-no.: ⇒ 219 659)	Page 37 and 38
Electrical parts III (Mach.-no.: 219 660 ⇒)	Page 39 and 40
Glass washing kit (option)	Page 41 and 42

Please note the following points with regard to this list:

See separate list for racks and accessories.

Enter the required quantity in the column marked "Pc." if more than 1 part is installed and if this part is not a standard part.

-1-  
GS 72



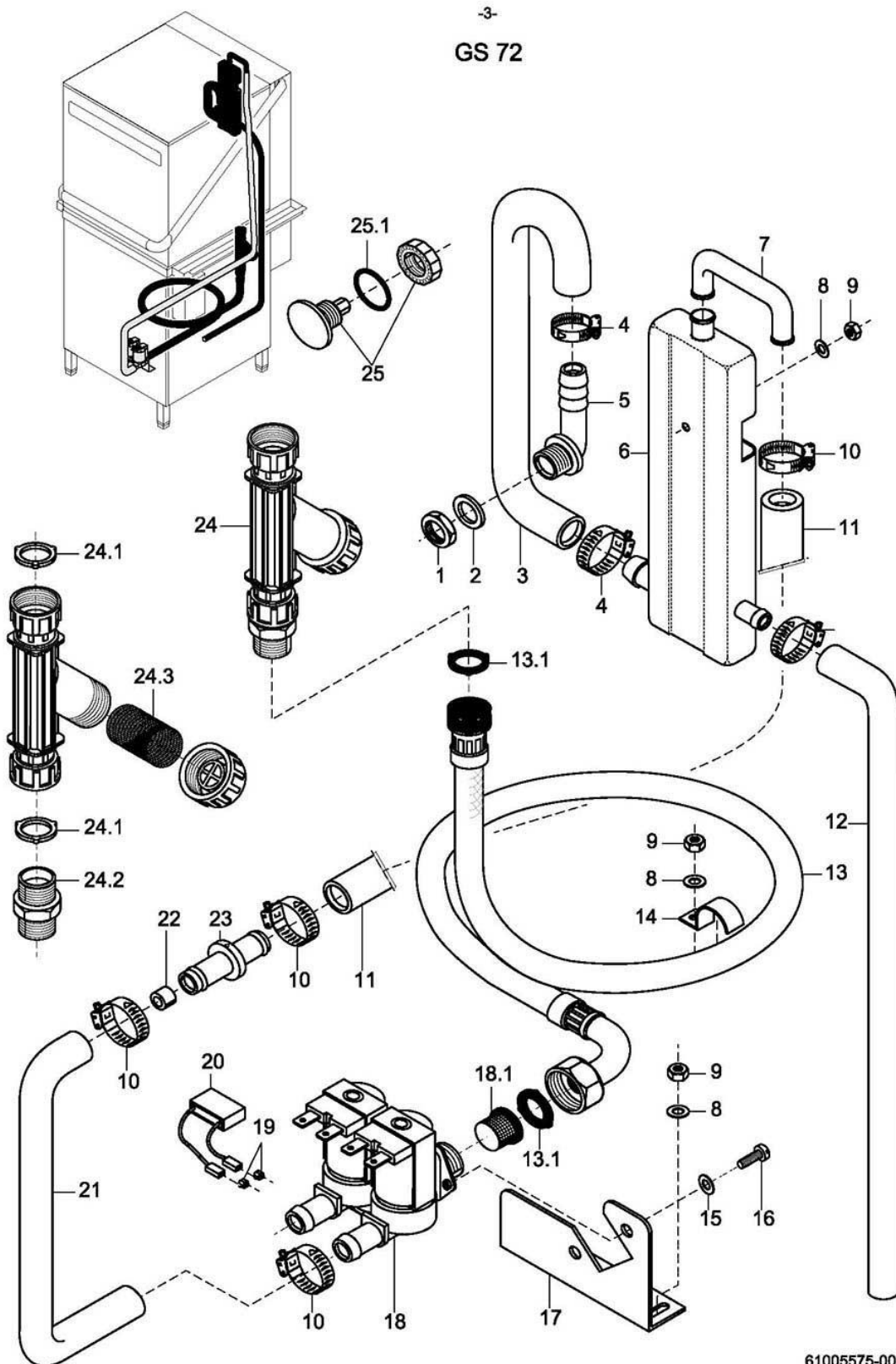
61005573-00

## GS 72

### Water inlet

Item	Designation	Part No.	Pc.	Notes
1	Dirt collector cpl.	80002153		incl. items 1.1 - 1.3
1.1	Seal; $\varnothing$ 16 x $\varnothing$ 24 x 3.0	80002241	2	
1.2	Union stem; G 3/4" x 40; width A/F30	80002167		
1.3	Dirt trap	80002728		
	Strainer for dirt trap with right-angled outlet	31 06 135		
2	Metal hose; nom. dia. 15 x 2000; G 3/4"	29 01 316		incl. item 2.1
	Metal hose; nom. dia. 12 x 1500; G 3/4"; WRC-tested	29 01 305		incl. item 2.1; Great Britain
2.1	Seal; $\varnothing$ 16 x $\varnothing$ 24 x 3.0	80002241	2	
n.p.	Extension hose; 1m	29 01 307		Additional equipment
3	Clip	55 25 017		
4	Washer; $\varnothing$ 5.3 x $\varnothing$ 10.0 x 1.0	22 01 300		
5	Hex nut; M 5 self-locking	21 05 302		
6	Support solenoid valve	61004065		
7	Lock washer; B 4	23 03 304		
8	Pan-head screw; M 4 x 8	20 10 309		
9	Double solenoid valve; 220-240V; 50/60Hz	31 06 182		incl. item 9.1
	Double solenoid valve; 180-220V; 50/60Hz	31 06 200		incl. item 9.1
9.1	Dirt trap	31 06 186		
n.p.	Solenoid valve (flow controller 15l); 220-240V; 50/60Hz	31 06 180	2	with double water connection
10	Tab connector	31 12 018	2	with AquaMatik; connect parallel
11	RC element; 0.15 $\mu$ F; 3.3k $\Omega$	31 13 114		to solenoid valve
12	Hose clip; $\varnothing$ 14 - 24 x 9	28 02 108		
13	Shaped hose; nom. dia. 12.5 x 4.0 x 1300	40 03 051		cut to size
14	Water inlet set	55 31 007		incl. items 14.1, 14.2
14.1	Seal; D21 x D28 x 2,0	27 09 011		replaced by 55 31 007
14.1	Seal; $\varnothing$ 20.5 x $\varnothing$ 28.5 x 2.0	27 01 002		replaced by 55 31 007
14.1	O-ring; 20 x 3	27 07 031		
14.2	Hose clip; $\varnothing$ 14 - 24 x 9	28 02 108		
15	Shaped hose; nom. dia. 12.5 x 4.0 x 1300	40 03 050		cut to size
	Hose; nom. dia. 13.5 x 3.5 x 1600	40 02 029		cut to size; Great Britain
16	Hose; nom. dia. 13.5 x 3.5 x 250	40 02 029		per metre
17	Backflow restrictor, top	35 01 193		
18	Hex nut; M 6	21 01 304		
19	Hose; nom. dia. 13.5 x 3.5 x 250	40 02 029		per metre
20	O-ring; 13 x 2.5	27 07 019		
21	Vent; $\varnothing$ 13	61003425		

-3-  
GS 72

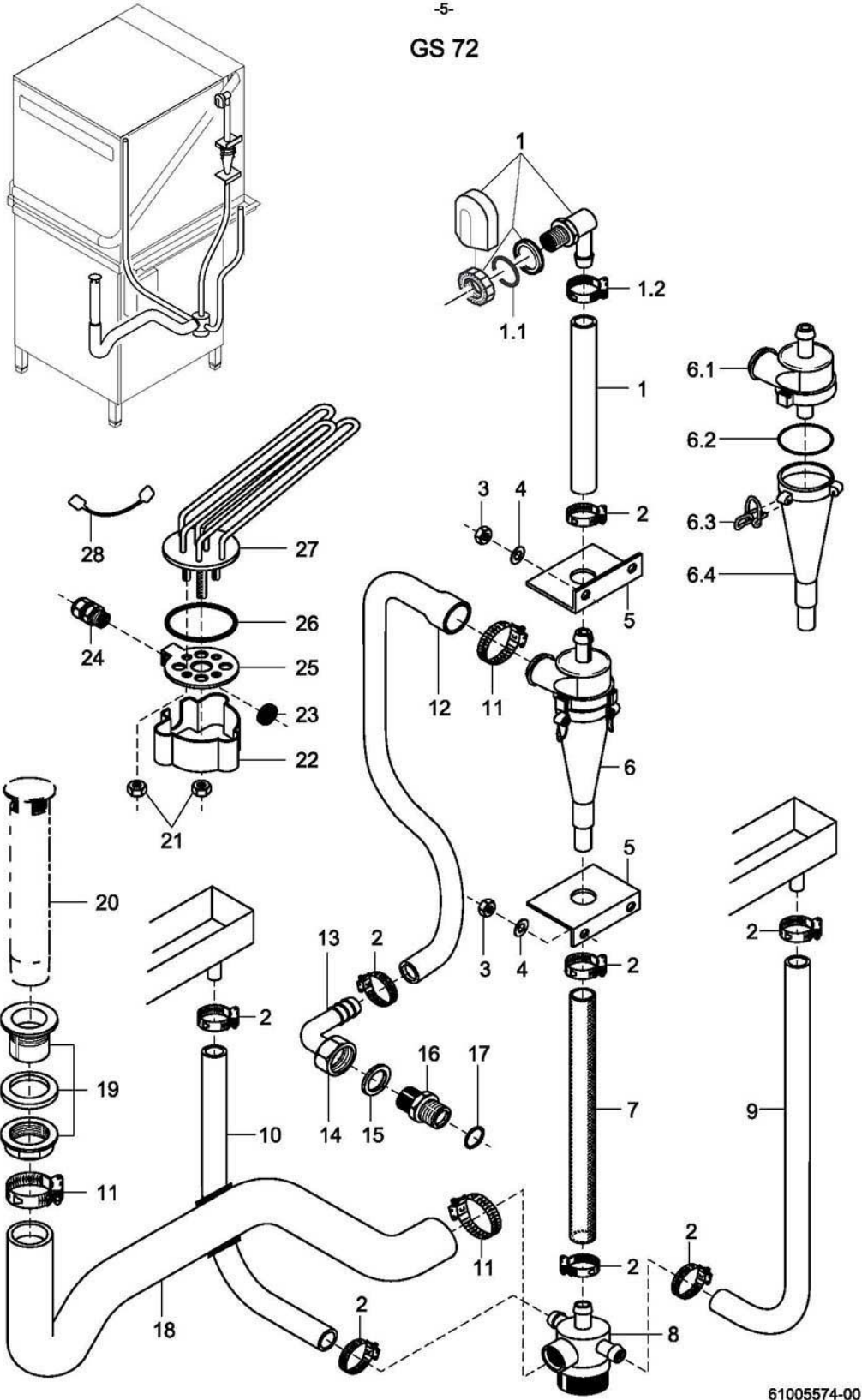


**GS 72**

Water inlet - Tundish (Great Britain only)

Item	Designation	Part No.	Pc.	Notes
1	Lock nut; G 3/4" x 18; width across flats 32	30 09 502		
2	Seal; $\varnothing$ 26 x $\varnothing$ 36 x 2.0	27 01 003		
	O-ring; 24 x 3.0	27 07 087		
3	Hose bend; nom. dia. 25 x 4.0	61004322		
4	Hose clip; $\varnothing$ 24 - 44 x 12	28 02 309		
5	Wash manifold	62002887		adapt
6	Intermediate tank	60002542		
7	Pipe bend; $\varnothing$ 12 x $\varnothing$ 14 x 2.0	60002507		
8	Washer; $\varnothing$ 5.3 x $\varnothing$ 10.0 x 1.0	22 01 300		
9	Hex nut; M 5 self-locking	21 05 302		
10	Hose clip; $\varnothing$ 14 - 24 x 9	28 02 108		
11	Hose; nom. dia. 13.5 x 3.5 x 1300	40 02 029		per metre
12	Shaped hose; nom. dia. 12.5 x 4.0	40 03 050		adapt
13	Metal hose; nom. dia. 12 x 1500; G 3/4"; WRC-tested	29 01 305		incl. item 13.1
13.1	Seal; $\varnothing$ 16 x $\varnothing$ 24 x 3.0	80002241	2	
14	Clip	55 25 017		
15	Lock washer; B 4	23 03 304		
16	Pan-head screw; M 4 x 8	20 10 309		
17	Support solenoid valve	61004065		
18	Double solenoid valve; 220-240V; 50/60Hz	31 06 182		incl. item 18.1
18.1	Dirt trap	31 06 186		
19	Tab connector	31 12 018	2	
20	RC element; 0.15 $\mu$ F; 3.3k $\Omega$	31 13 114		
21	Hose; nom. dia. 13.5 x 3.5 x 320	40 02 029		per metre
22	Flow controller (5 l/min)	31 06 195		
23	Adaptor; 54 x $\varnothing$ 20	61004511		
24	Dirt collector cpl.	80002153		incl. items 24.1 - 24.3
24.1	Seal; $\varnothing$ 16 x $\varnothing$ 24 x 3.0	80002241	2	
24.2	Union stem; G 3/4" x 40; width A/F30	80002167		
24.3	Dirt trap	80002728		
	Strainer for dirt trap with right-angled outlet	31 06 135		
25	Plug; G 3/8"	70004899		incl. item 25.1
25.1	O-ring; 16 x 2.5	27 07 001		

-5-  
GS 72



61005574-00

**GS 72**

Water drain, Mediamat and tank heating

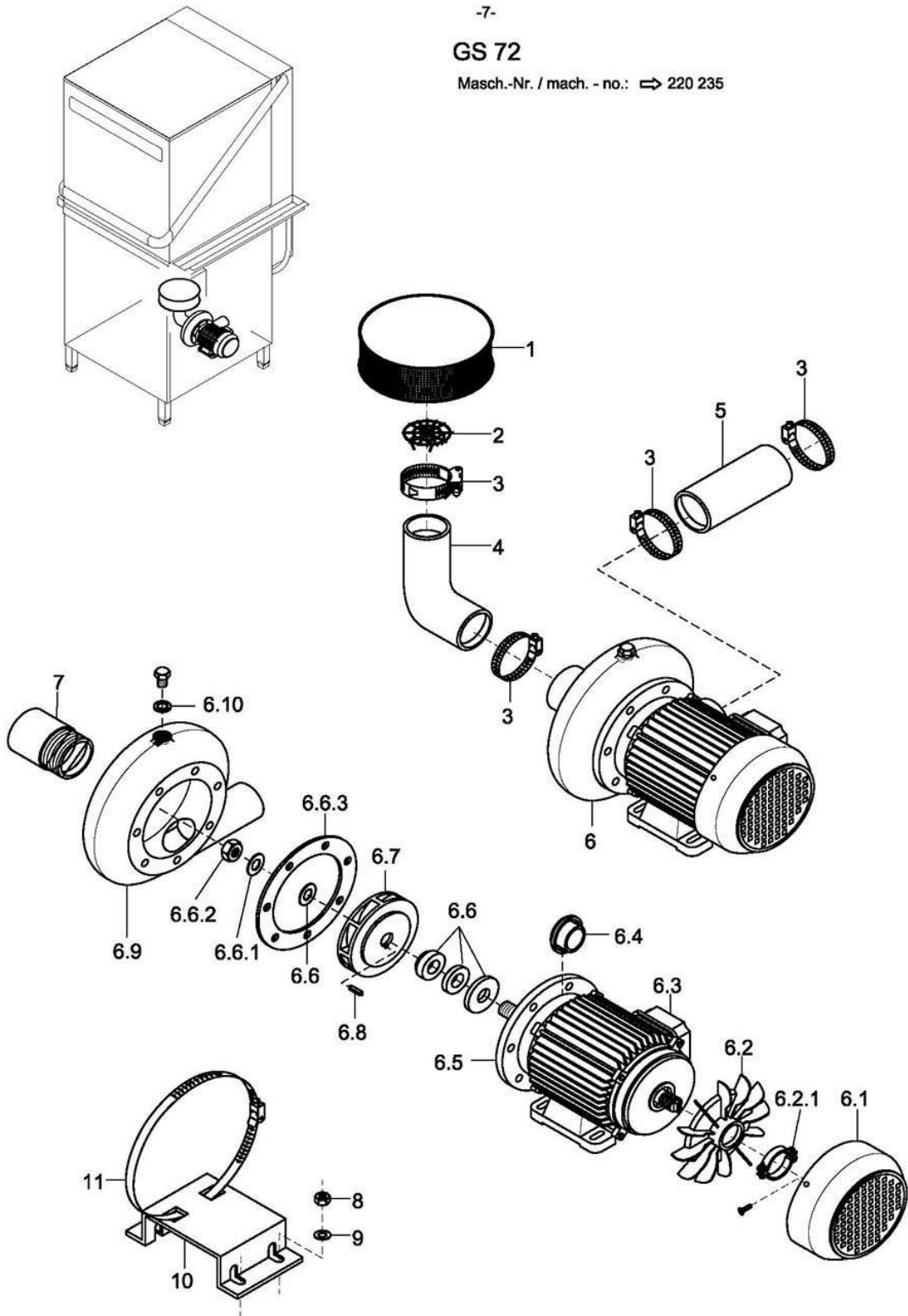
Item	Designation	Part No.	Pc.	Notes
1	Set Mediamat inlet	55 31 001		incl. items 1.1, 1.2
1.1	Seal; D21 x D28 x 2,0	27 09 011		replaced by 55 31 001
1.1	Seal; ø 20.5 x ø 28.5 x 2.0	27 01 002		replaced by 55 31 001
1.1	O-ring; 20 x 3	27 07 031		
1.2	Hose clip; ø 20 - ø 30 x 12	28 02 109		
2	Hose clip; ø 20 - ø 30 x 12	28 02 109		
3	Hex nut; M 5 self-locking	21 05 302		
4	Washer; ø 5,3 x ø 12 x 0,8	22 02 313		
5	Retaining angle	61000658	2	
6	Mediamat cpl.	55 27 040		incl. items 6.1 - 6.4
6.1	Head piece inlet; ø 30	35 01 124		
6.2	O-ring; 51 x 3.0	27 07 043		
6.3	End piece fastener; ø 2	28 04 041	4	
6.4	Accelerator; ø 75 x 169 x ø 4.3	35 01 035		
7	Fabric hose; nom. dia. 19 x 3.5 x 750	40 01 016		per metre
8	Mediamat drain; G 1 1/2"; ø 40	35 01 080		
9	Hose reduction elbow; 90°; nom. dia. 19 x nom. dia. 22 x 1,75; 125 x 480	61002466		
10	Hose reduction elbow; 90°; nom. dia. 19 x nom. dia. 22 x 1,75; 200 x 670	61002799		
n.p.	Reducing elbow; nom dia. 19 x nom. x nom. dia. 22	61002800		angled design
11	Hose clip; ø 32 - ø 52 x 12	28 02 110		
12	Reduction hose; nom. dia. 16 x DN 30 x 5.0 x 640	40 03 036		
13	Mediamat connecting bend	29 06 524		
14	Cap nut; G 3/4" x ø 20; width A/F 30 x 14	29 07 203		
15	Seal; ø 19.5 x ø 24 x 1.5	27 09 010		
16	Mediamat connecting nipple; G 1/2" x G 3/4" x 32	30 11 502		
17	O-ring; 20 x 3.5	27 07 040		
18	Siphon	55 05 048		cast iron pump; to 220 235
	Siphon	61003408		plastic pump; from 220 236
19	Standpipe valve base; G 1 1/4" x 43	61002211		
20	Standpipe; overflow height 290mm	61002517		
21	Hex nut; M 5	21 01 203		
22	Cap	31 03 014		
23	Hex nut; PG 13.5	31 10 041		
24	Cable gland; PG 13.5	31 10 040		
25	Heating element flange	31 03 067		
26	O-ring; 43 x 7.0	27 07 088		
27	Heating element cranked; 6.0kW; 3 x 230/400V	31 03 025		
	Heating element cranked; 6.0kW; 3 x 240/420V	31 03 042		
	Heating element cranked; 6.0kW; 3 x 200/346V	31 03 045		
28	Star bridge with nozzle; 2.5 mm <sup>2</sup>	31 23 088	2	



-7-

# GS 72

Masch.-Nr. / mach. - no.: ⇨ 220 235

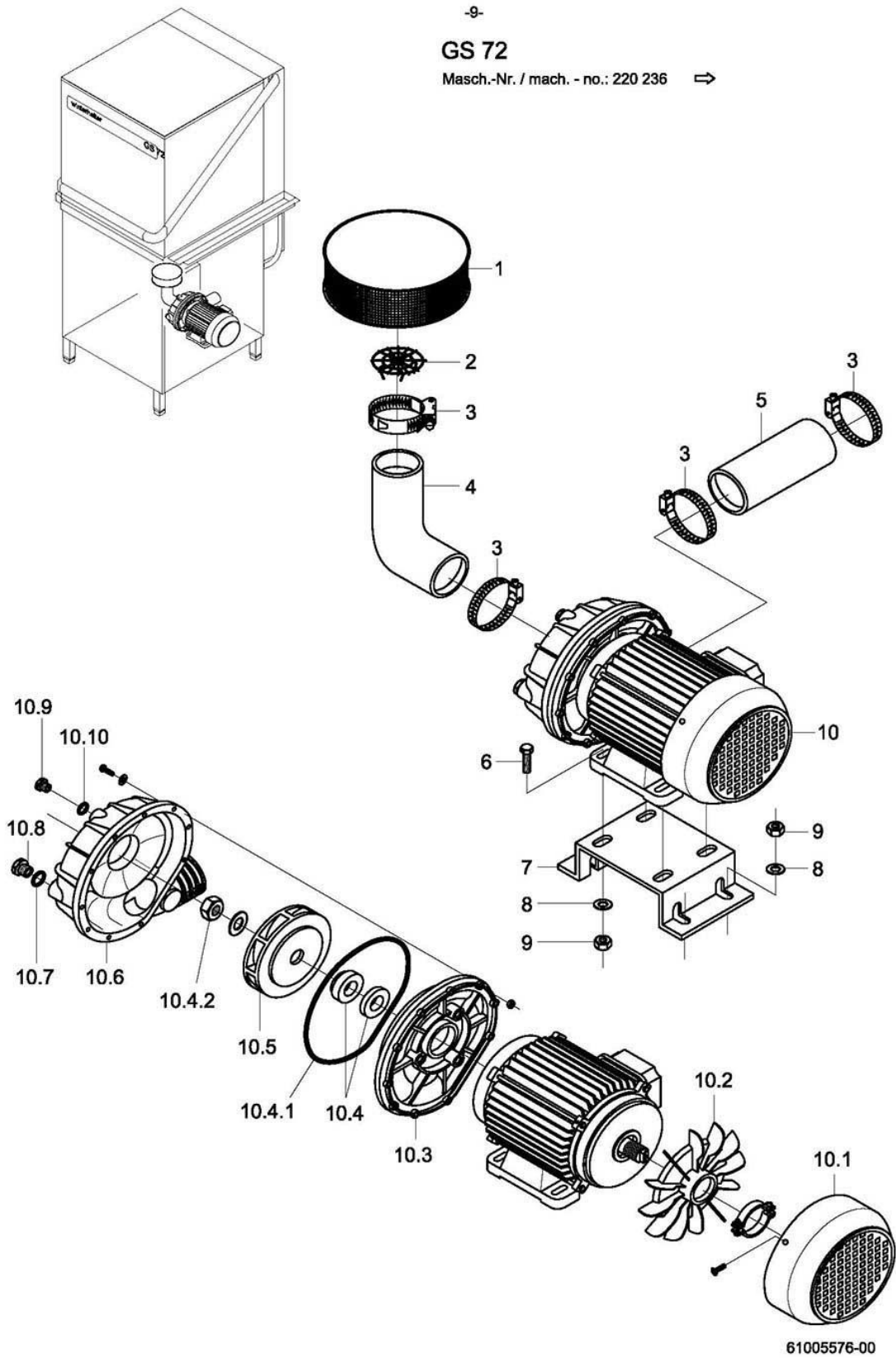


61005575-00



# GS 72

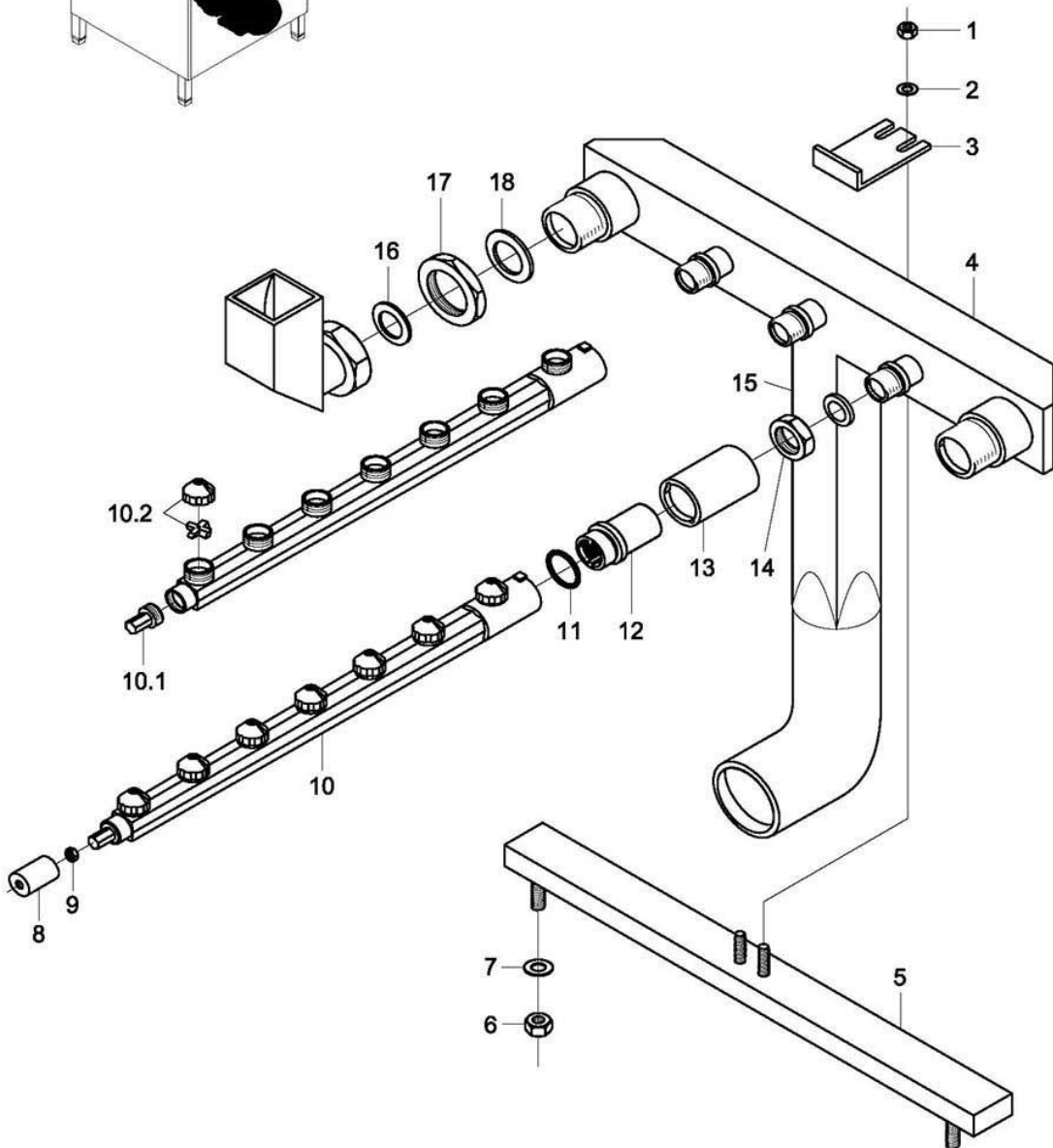
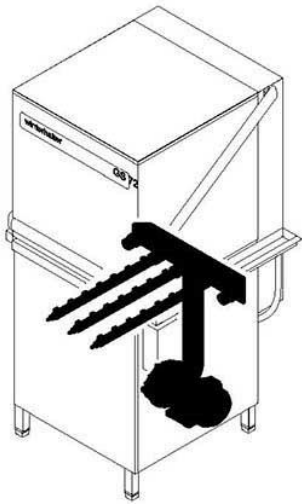
Masch.-Nr. / mach. - no.: 220 236 →



61005576-00



-11-  
GS 72

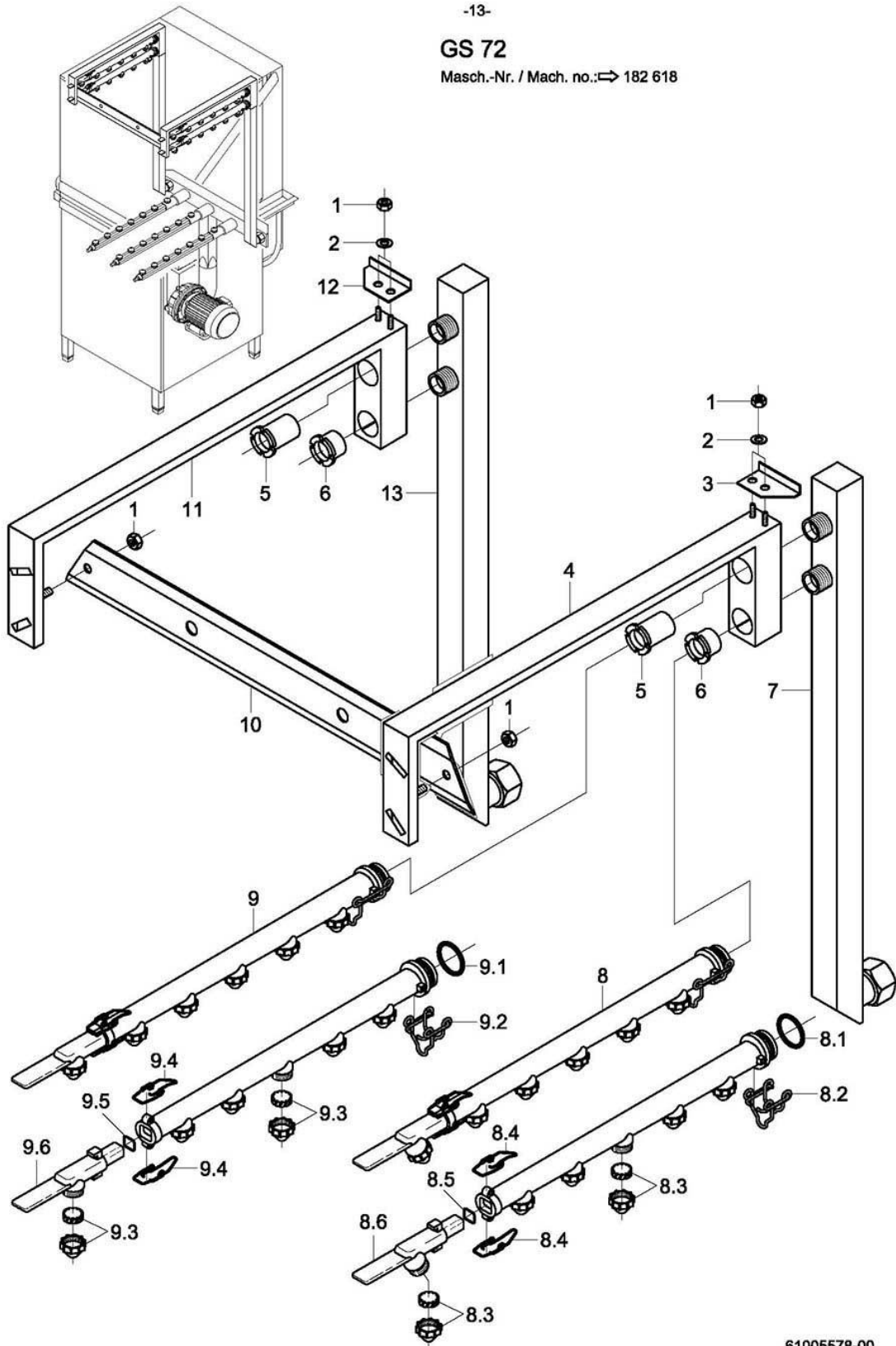


61005577-00



### GS 72

Masch.-Nr. / Mach. no.: → 182 618

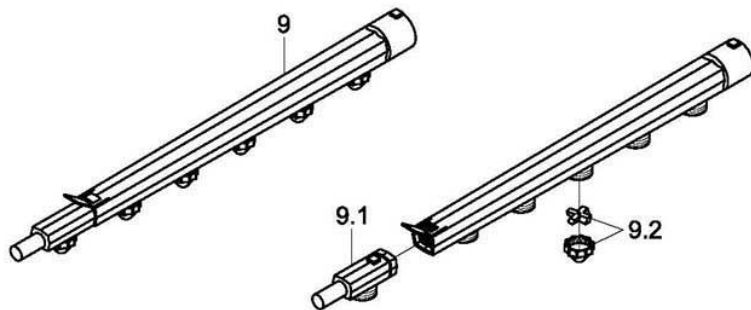
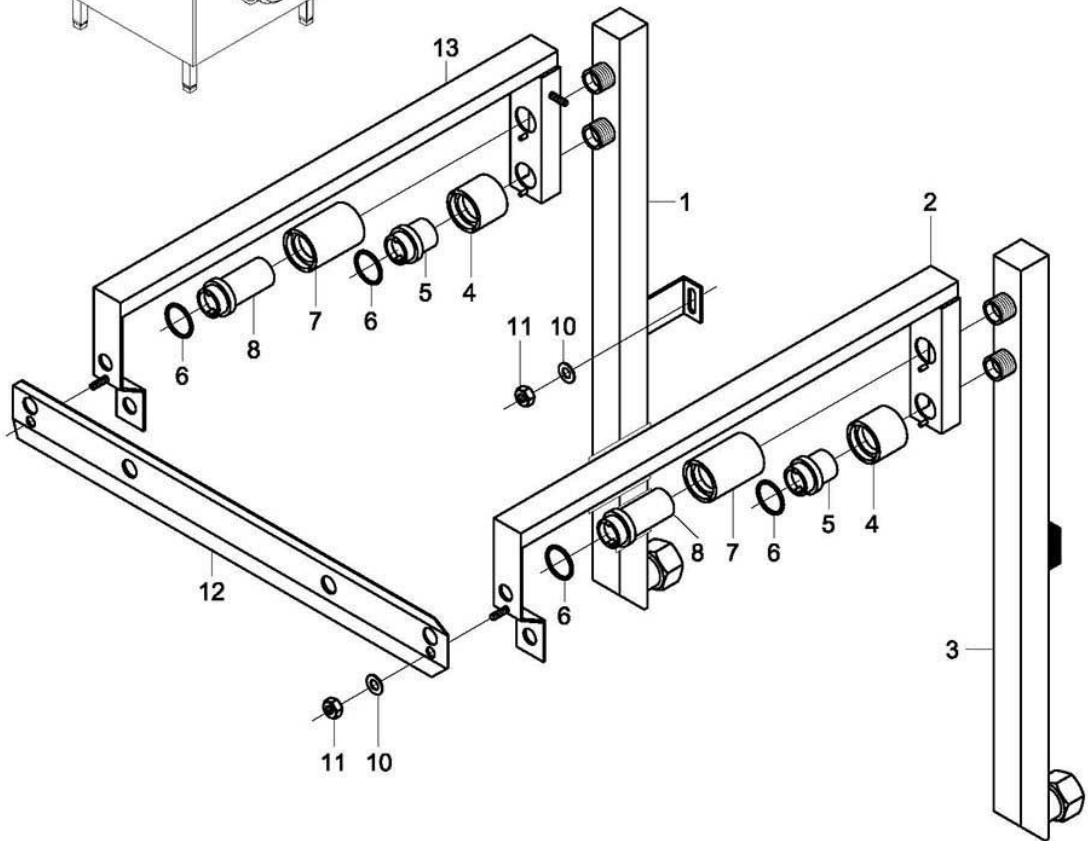
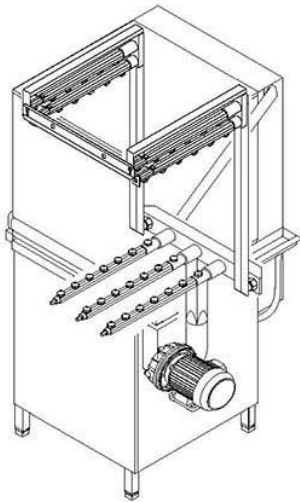






# GS 72

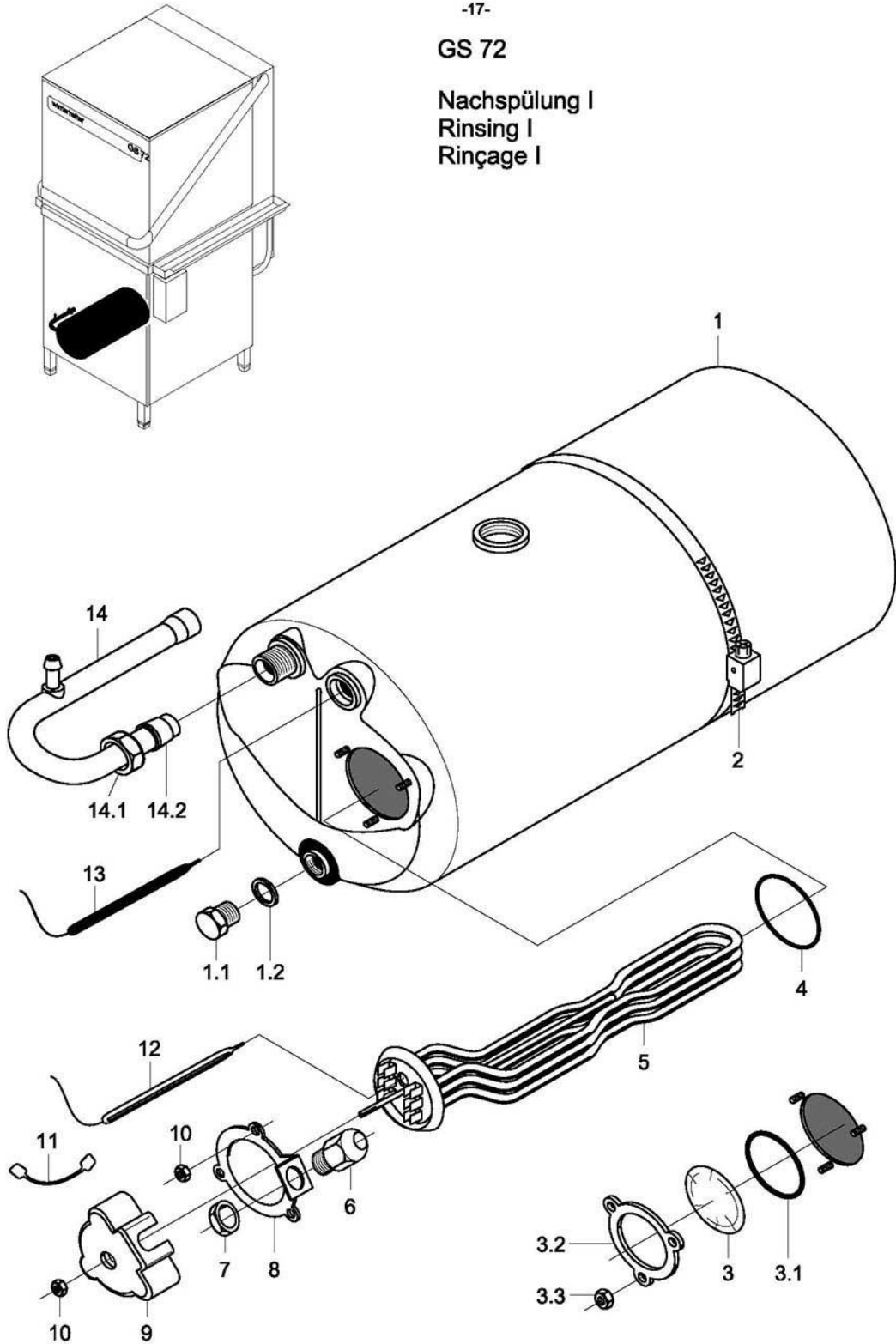
Masch.-Nr. / Mach. no.: 182 619 →





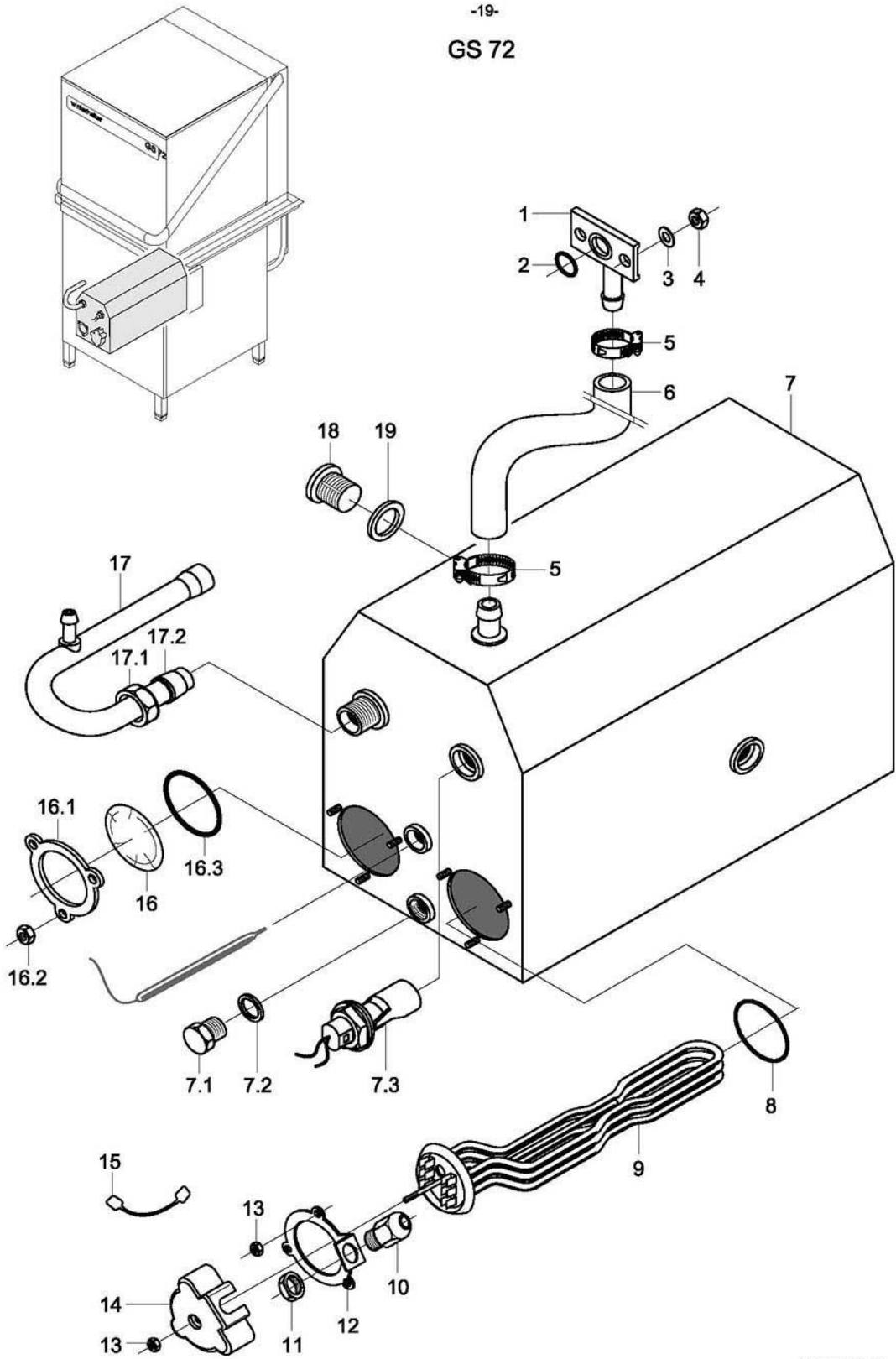
GS 72

Nachspülung I  
Rinsing I  
Rinçage I





# GS 72

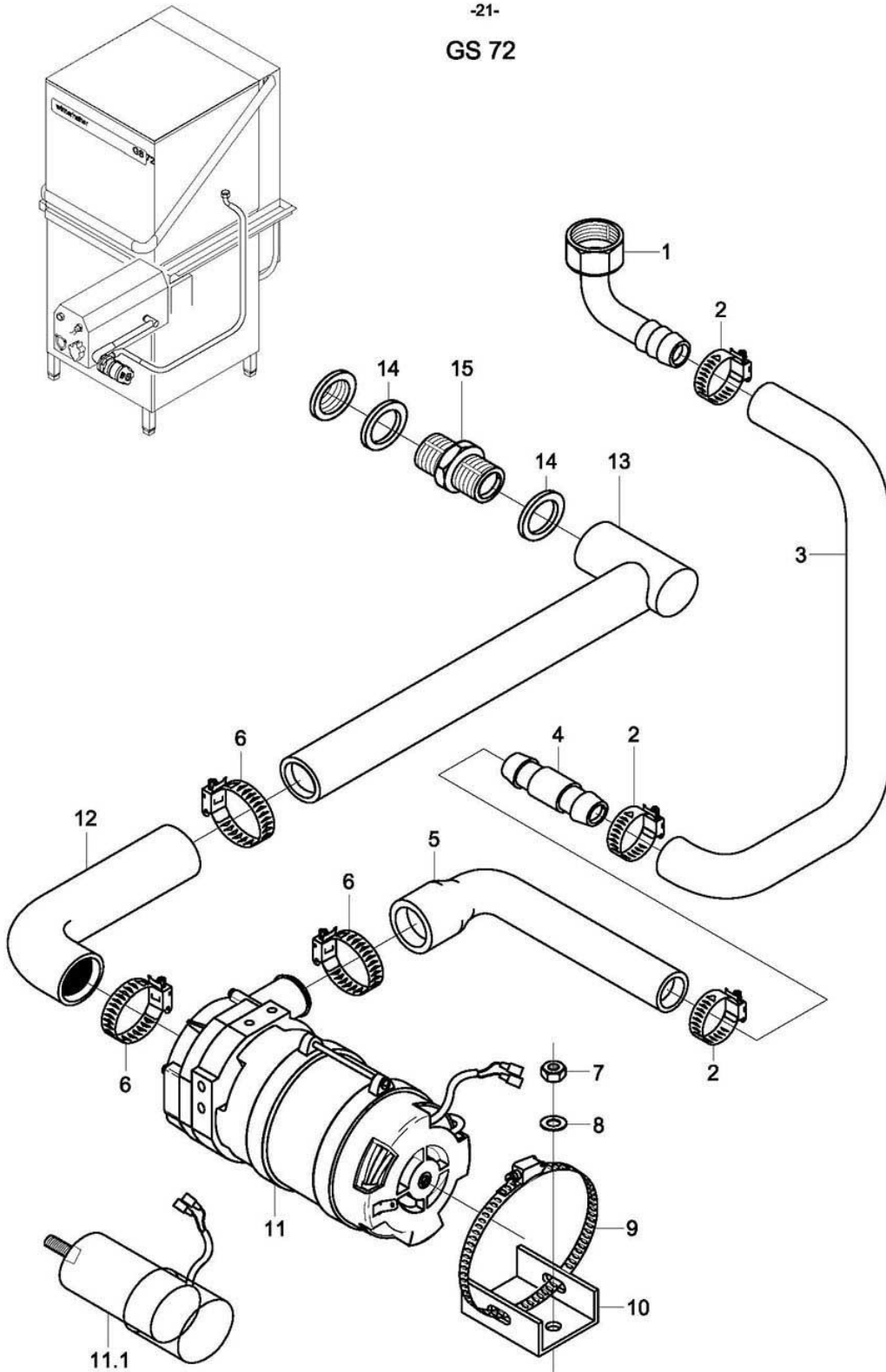


GS 72

Rinsing II - AquaMatik

Item	Designation	Part-No.	Pc.	Notes
1	Vent; ø 13	61003425		
2	O-ring; 13 x 2.5	27 07 019		
3	Washer; ø 5.3 x ø 10 x 1.0	22 01 300		
4	Hex nut; M 5 self-locking	21 05 302		
5	Hose clip; ø 14 - 24 x 9	28 02 108		
6	Hose; nom. dia. 13.5 x 3.5 x 1800	40 02 029		per metre
7	Boiler frame cpl., non-pressurised	80002128		incl. items 7.1 - 7.3
7.1	Hex-head screw; M 10 x 16	20 01 352		
7.2	Seal; ø 10 x ø 18 x 1.5	27 03 003		
7.3	Float switch set; 250V; 15VA	55 28 255		
n.p.	Seal; float switch	31 26 036		
8	O-ring; 43 x 7.0	27 07 088		
9	Heating element cranked; 9.0kW; 230V/400V/3	31 03 018		
	Heating element cranked; 6.0kW; 230V/400V/3	31 03 017		
	Heating element cranked; 6.0kW; 240V/420V/3	31 03 043		
	Heating element cranked; 6.0kW; 200V/346V/3	31 03 046		
	Heating element cranked 6.0kW; 254V/440V/3	31 03 034		
10	Cable gland; PG 13.5	31 10 040		
11	Hex nut; PG 13.5	31 10 041		
12	Clamping plate	55 19 018		
13	Hex nut; M 5	21 01 203		
14	Cap	31 03 014		
15	Star bridge with nozzle; 2.5 mm <sup>2</sup>	31 23 088	2	
16	Blank flange; ø 60	60002787		incl. items 16.1 - 16.3
16.1	Clamping plate	01 17 003		
16.2	Hex nut; M 5	21 01 203		
16.3	O-ring; 43 x 7.0	27 07 088		
17	Boiler inlet bend cpl.	55 09 054		incl. items 17.1, 17.2
17.1	Cap nut; G 1/2" x ø 12.2; width across flats 24	29 07 201		
17.2	Cutting ring; ø 15 x 10; nom. dia. 12	29 07 300		
18	Locking screw; G 1/2"	30 08 303		
19	Seal; ø 21 x ø 28 x 2.0	27 09 011		

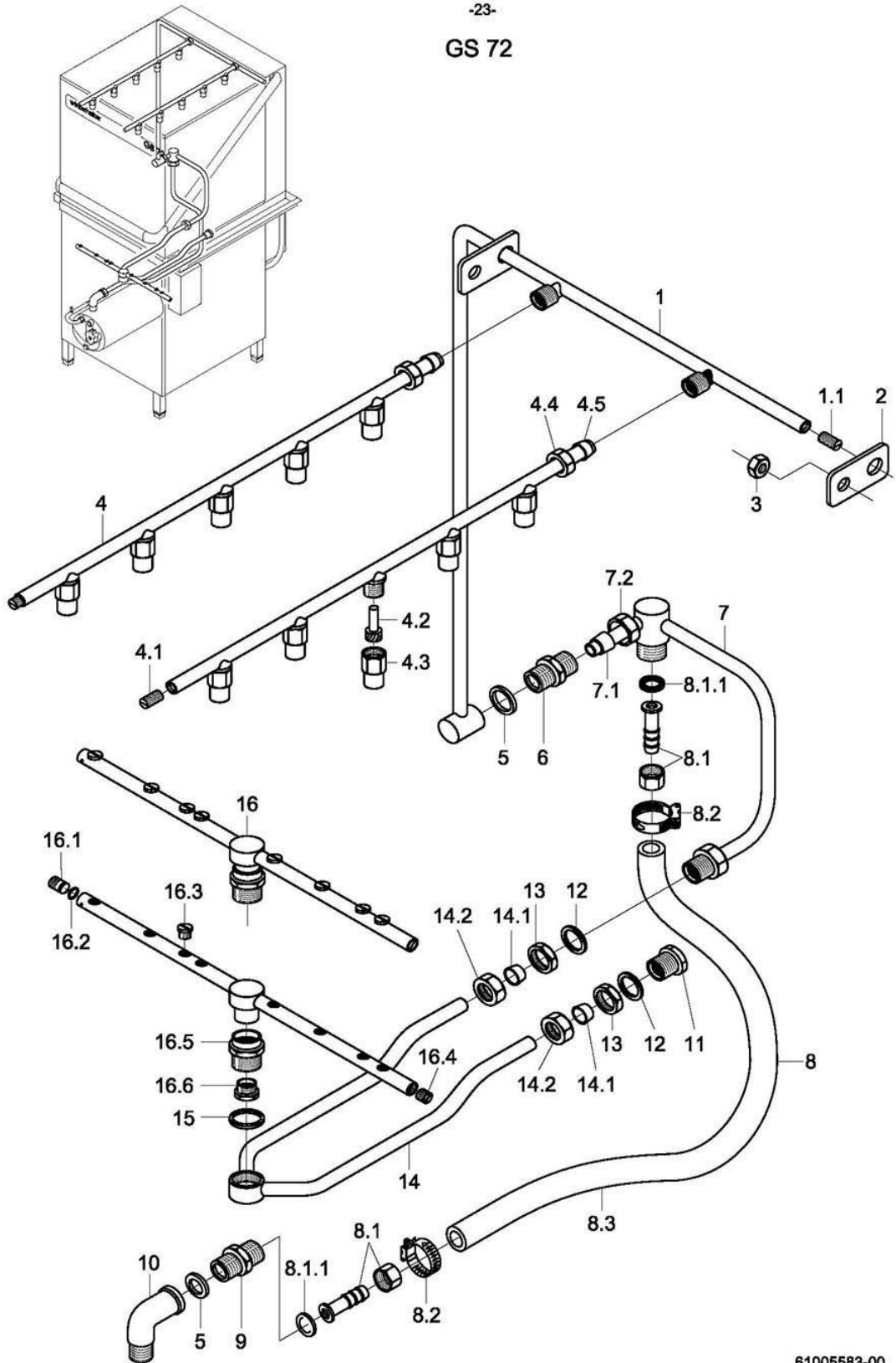
-21-  
GS 72







# GS 72



## GS 72

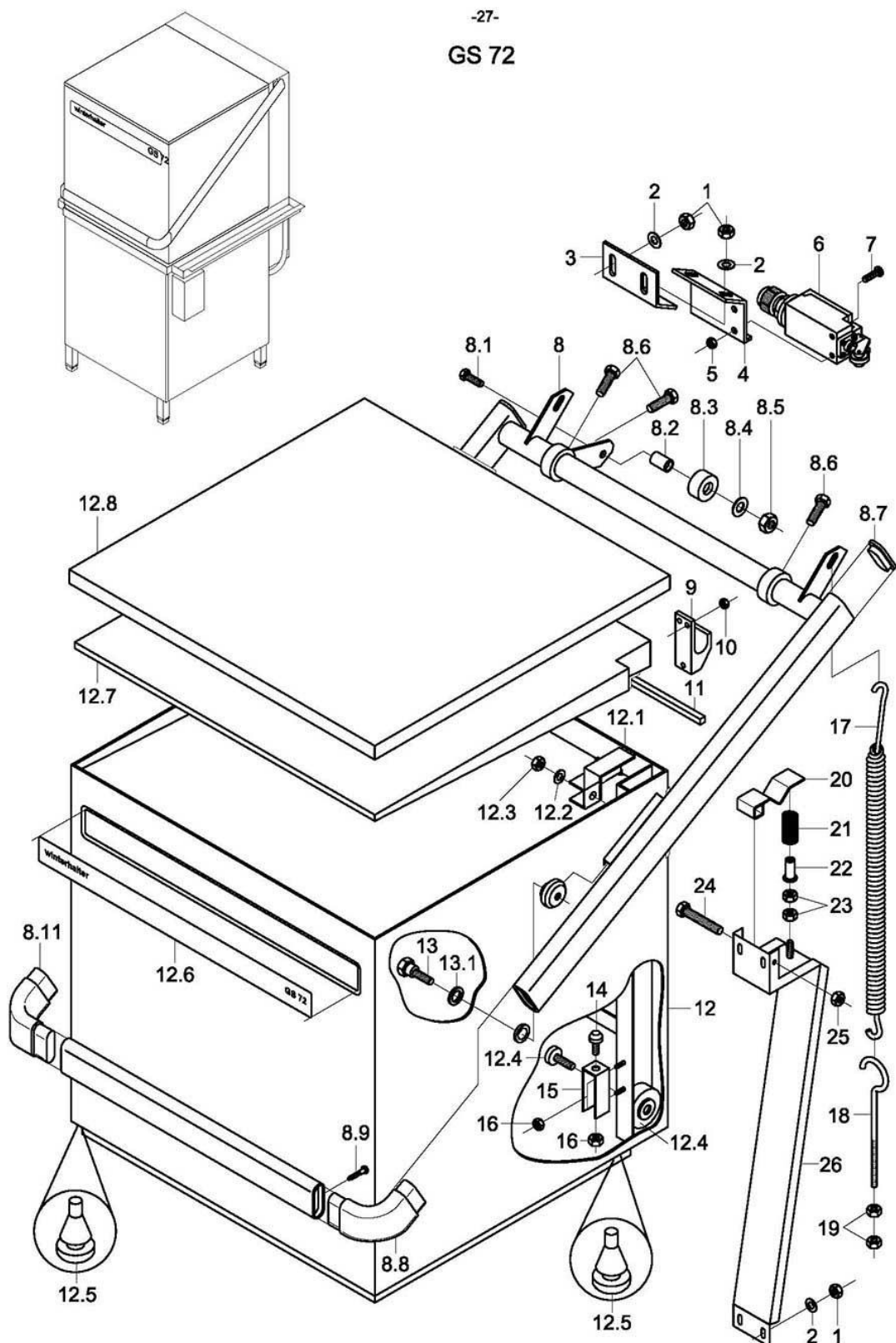
### Rinsing IV

Item	Designation	Part-No.	Pc.	Notes
1	Rinse manifold; internal	61002467		incl. item 1.1
1.1	Grub screw; M 11 x 1.0 x 20	20 30 503		
2	Pipe tab	61002465		
3	Hex nut; M 5	21 01 303		
4	Rinse pipe cpl.	61002301	2	incl. items 4.1 - 4.5
4.1	Grub screw; M 9 x 15	20 30 504	2	
4.2	Nozzle swirl device; $\varnothing$ 8 x 18.8	65002764	10	
4.3	Nozzle cap; $\varnothing$ 14.6 x 21	65002765	10	
4.4	Cap nut; G 3/8" x $\varnothing$ 10.2	29 07 200	2	
4.5	Clamping ring; $\varnothing$ 10.2	29 07 500	2	
5	Seal; $\varnothing$ 21 x $\varnothing$ 28 x 2.0	27 09 011		
6	Union stem; G 1/2" x 38; width A/F 27	30 11 301		
7	Rinse manifold; external cpl.	61002285		incl. items 7.1, 7.2
7.1	Cutting ring; $\varnothing$ 15 x 10; nom. dia. 12	29 07 300		without glass washing kit
7.2	Cap nut; G 1/2" x $\varnothing$ 12.2; width across flats 24	29 07 201		
8	Set rinse connection	61005650		incl. items 8.1 - 8.3
8.1	Hose stem	60002453	2	incl. items 8.1.1
8.1.1	Seal; $\varnothing$ 14 x $\varnothing$ 23.5 x 2.0	27 01 028		
8.2	Hose clip; $\varnothing$ 14 - 24 x 9	28 02 108	2	
8.3	Hose; nom. dia. 13.5 x 3.5 x 900	40 02 029		per metre
9	Reducing nipple, G 1/2" x G 3/4"; width AF 27	61003430		pressurized boiler
10	Angle; G 1/2"	30 02 301		
11	Nipple; G 3/8"	61002295		
12	Seal; $\varnothing$ 17 x $\varnothing$ 24 x 2.0	27 09 009		
13	Hex nut; G 3/8" x 5.5	30 09 200		
14	Revolving arm support cpl.	61003400		incl. items 14.1, 14.2
14.1	Clamping ring; $\varnothing$ 10.2	29 07 500	2	
14.2	Cap nut; G 3/8" x $\varnothing$ 10.2	29 07 200	2	
15	Seal; $\varnothing$ 27 x $\varnothing$ 34 x 2.0	27 09 025		
16	Revolving arm cpl.	55 10 091		incl. items 16.1 - 16.6
16.1	Grub screw; M 11 x 0,75 x 14	29 10 240		
16.2	O-ring; 7 x 1.5	27 07 014		
16.3	Flat jet nozzle	29 10 312	8	
16.4	Grub screw; M 11 x 1.0 x 8	29 10 239		
16.5	Revolving arm bush; G 3/4" x 24.5	35 01 161		
16.6	Revolving arm screw; M 14 x 1	20 19 204		





-27-  
GS 72



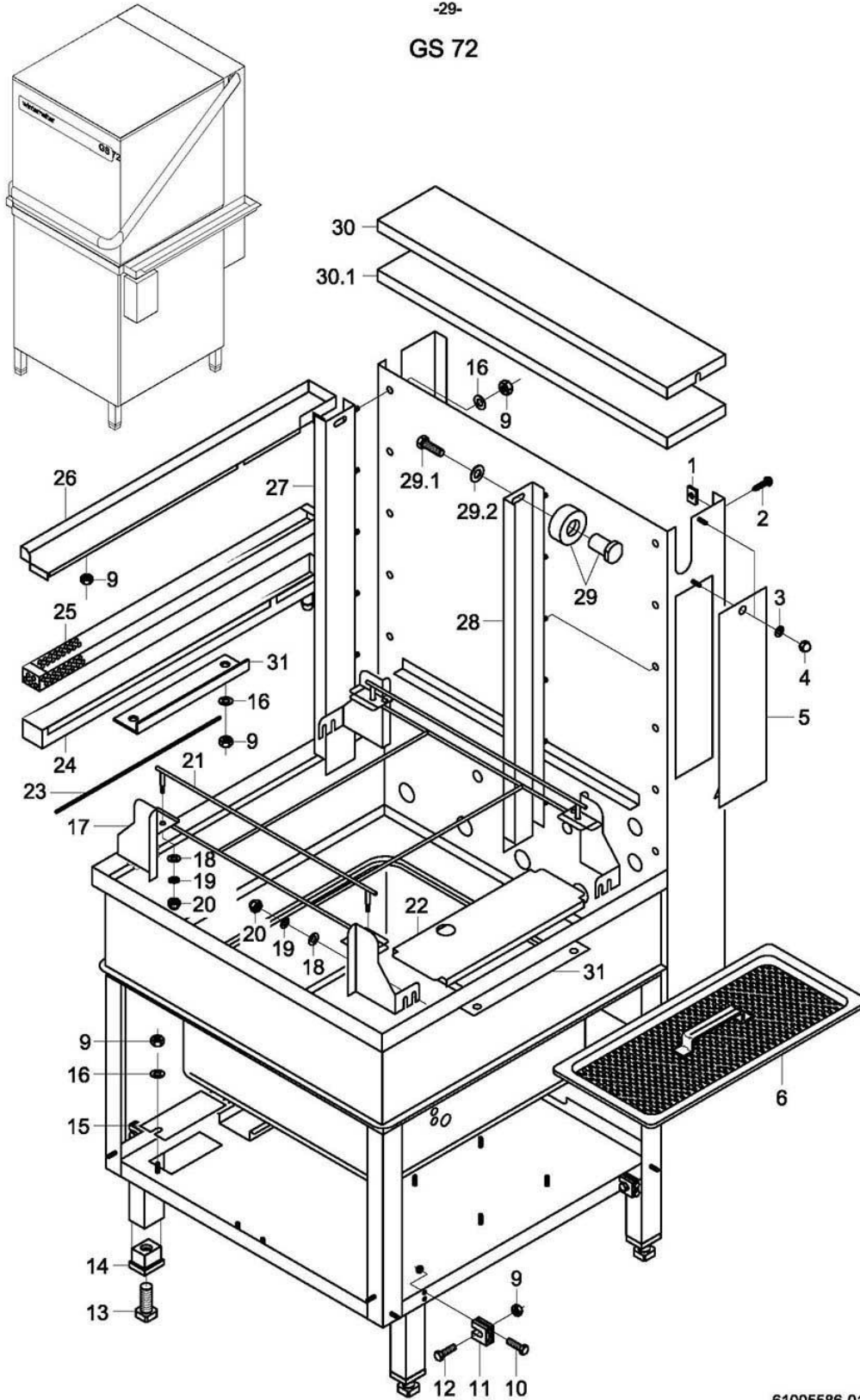
61005585-00

## GS 72

### Hood and hood guide

Item	Designation	Part-No.	Pc.	Notes
1	Hex nut; M 5	21 01 303		
2	Washer; $\varnothing$ 5.3 x $\varnothing$ 10.0 x 1.0	22 01 300		
3	Limit switch plate	61002946		
4	Limit switch bracket	61002949		
5	Hex nut; M 4	21 01 302		
6	Limit switch	80003235		
7	Pan-head screw, M 4 x 25	20 10 215		
8	Door lever cpl.	61002318		incl. item 8.1 - 8.11
8.1	Hex-head screw; M 8 x 30	20 01 304		
8.2	Brake bush	61002602		
8.3	Brake roller; $\varnothing$ 30 x 15	61002601		
8.4	Washer; $\varnothing$ 8.4 x $\varnothing$ 17 x 1.6	22 01 303		
8.5	Hex nut; M 8 self-locking	21 05 306		
8.6	Hex-head screw; M 8 x 20	20 01 312	3	
8.7	Cap; 15 x 17 x 45	35 03 027	2	
8.8	Connecting corner; right	61003361		
8.9	PT screw; KA 40 x 12	20 17 302	2	
8.10	Oval profile section; 17 x 45 x 1.2 x 664	61002340		
8.11	Connecting corner; left	61003362		
9	Door lever bearing	61002464	2	
10	Hex nut; M 6	21 01 304		
11	OWA band; 5 x 20 x 750	34 02 010		per metre
12	Hood cpl.	55 20 030		incl. items 12.1 - 12.8
12.1	Hood cover; right	61002801		
n.p.	Hood cover; left	61002802		
12.2	Washer; $\varnothing$ 5.3 x $\varnothing$ 10.0 x 1.0	22 01 300		
12.3	Hex nut; M 5	21 01 303		
12.4	Set hood roll	61005649		For both sides
12.5	Frame buffer	40 06 016	4	
12.6	Machine nameplate	61002460		
12.7	Polystyrene wedge	61002622		
12.8	Hood cover plate	61002621		
13	Set door lever rolls	61005653		incl. items 13.1; for both sides
13.1	Seal; $\varnothing$ 13.3 x $\varnothing$ 18 x 2.0	27 09 012	2	
14	Rubber buffer	40 06 004	2	
15	Buffer bracket	61002380	2	
16	Hex nut; M 6 self-locking	21 05 304		
17	Tension spring	61002022	2	
18	Eye bolt; M 10 x 110	61002816	2	
19	Hex nut M10	21 02 306	4	
20	Notch lever	61002473		
21	Pressure spring; hood brake	61002599		
22	Locating device for spring	61002628		
23	Hex nut; M 8	21 01 305	2	
24	Hex-head screw; M 8 x 60	20 01 351		
25	Hex nut; M 8 self-locking	21 05 306		
26	Brake bracket	61002600		

# GS 72



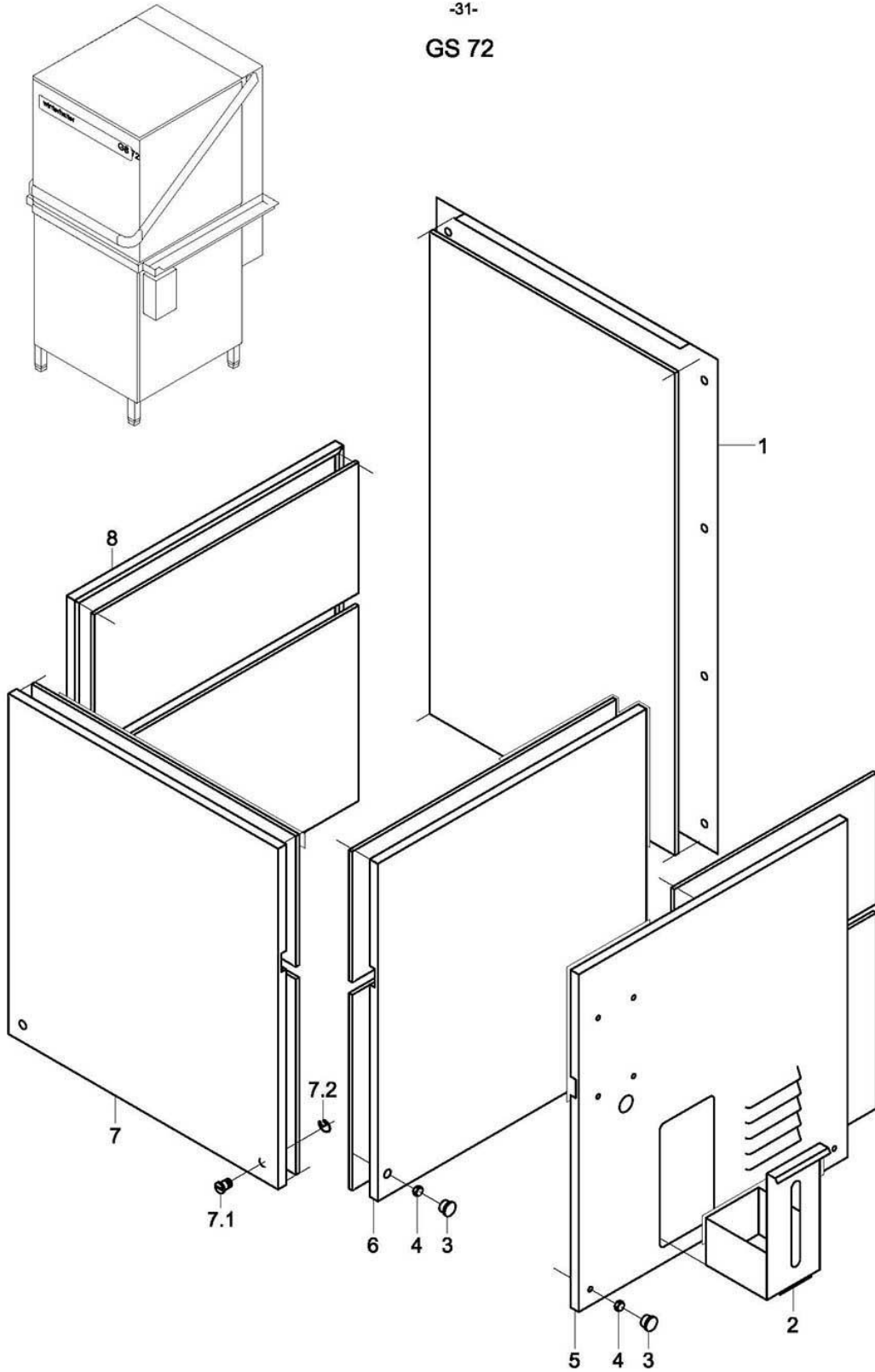
## GS 72

### Container, rack guide and Channel

Item	Designation	Part-No.	Pc.	Notes
1	Sheet-metal nut; B 3.9	21 17 300		
2	Sheet-metal screw, B 3.9 x 16	20 20 300		
3	Washer; $\varnothing$ 4.3 x $\varnothing$ 8 x 0.5	22 02 202		
4	Cap nut; M4	21 10 202		
5	Flap for Mediamat	61002215		
6	Surface strainer	61002537	2	
7	Fixing bracket	61002960	2	Channel
8	Hex nut; M 4	21 05 201		
9	Hex nut; M 5 self-locking	21 05 302		
10	Pan-head screw; M 4 x 30	20 10 316		
11	Strut retainer	35 01 068	4	
12	Pan-head screw; M 5 x 20	20 10 325		
13	Foot cleat; G 3/4"; 32 x 32 x 100	35 01 064	4	
14	Threaded insert; G 3/4"; 42 x 62 x 50	35 01 063	4	
15	Cover plate	61002611		
16	Washer; $\varnothing$ 5.3 x $\varnothing$ 10 x 1.0	22 01 313		
17	Rack support cpl.	61002350		GS 72 Eck too
18	Washer; $\varnothing$ 6.4 x $\varnothing$ 18 x 1.6	22 05 302		
19	Lock washer; B 6	23 03 300		
20	Hex nut; M 6	21 01 304		
21	Guide rod	80000185	2	
22	Surface strainer seat	61002264		
23	Round cord; $\varnothing$ 2.0 x 767	40 04 005	2	per metre
24	Water channel; left	61002867		table depth 800; GS 72 Eck too
	Water channel; right	61002866		table depth 800
	Water channel; left; 35 x 671	61002868		table depth 700; GS 72 Eck
	Dirt trap channel; left; 60 x 771	61002664		table depth 800
	Dirt trap channel; right; 60 x 771	61002665		table depth 800
	Dirt trap channel; left; 60 x 671	61002719		table depth 700; GS 72 Eck
25	Strainer insert; 28 x 761	61004552		table depth 800
	Strainer insert; 28 x 661	61004416		table depth 700
	Dirt trap; 28 x 761	61002668		table depth 800
	Dirt trap; 54 x 661	61002710		table depth 700
26	Wall end section; 55 x 837	61002754		table depth 700
	Wall end section; 155 x 837	61002753		table depth 800
	Wall end piece; right; width 48mm	61004475		table depth 700; control box left
	Wall end piece; right; width 148mm	61004476		table depth 700; control box left
27	Housing guide; left	61002218		
28	Housing guide; right	61002217		
29	Set hood roll	61005649		incl. items 29.1, 29.2 for both sides
29.1	Hex-head screw; M 6 x 16	20 01 306		
29.2	Washer; $\varnothing$ 6.4 x $\varnothing$ 12.5 x 1.6	22 01 302		
30	Rear panel cover	61002425		incl. item 30.1
30.1	Insulation 10 x 125 x 635	61002804		
31	Support	61002960		



-31-  
GS 72



61005587-00

GS 72

Panelling

Item	Designation	Part-No.	Pc.	Notes
1	Rear wall panelling; with insulation	61002809		
2	Rinse aid pocket	61002418		up to mach.-no.: 349 477
3	Cap	35 03 017		
4	Hex nut; M 4	21 05 201		
5	Panelling; right; with insulation	61002810		up to mach.-no.: 349 477
6	Panelling; right; with insulation	61003363		from mach.-no.: 349 478
7	Panelling; front; with insulation	61002412		incl. items 7.1, 7.2
7.1	Threaded cap; M 4 x $\varnothing$ 12	28 14 331	2	
7.2	Annular spring; $\varnothing$ 15.3 x $\varnothing$ 16.3 x $\varnothing$ 1.2	71002952	2	
8	Panelling; left; with insulation	61002811		

--	--	--	--	--

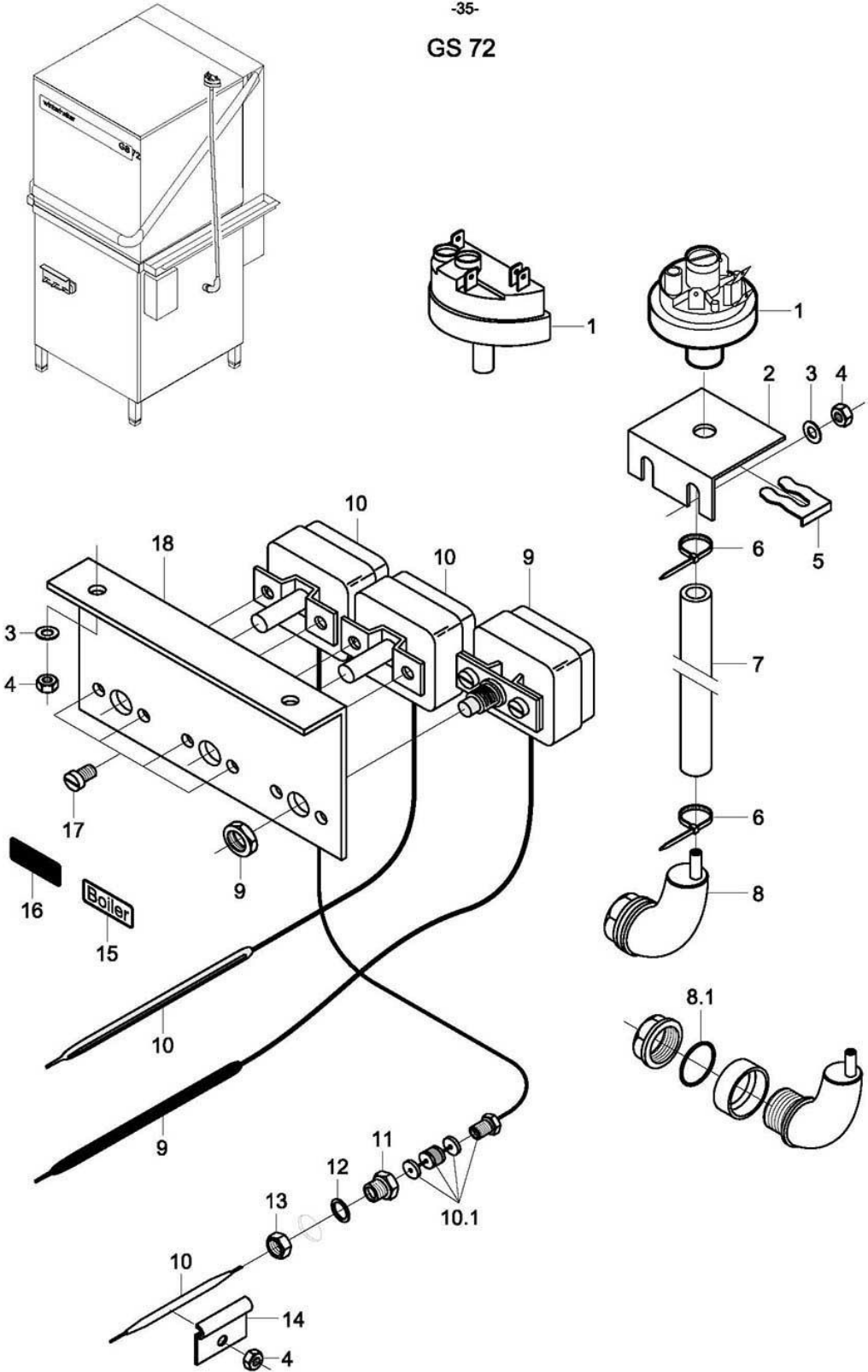


## GS 72

### Electrical parts I

Item	Designation	Part-No.	Pc.	Notes
1	Hex nut; M 5 self-locking	21 05 302		
2	Washer; $\varnothing$ 5.3 x $\varnothing$ 10 x 1.0	22 01 300		
3	Switch housing	61002698		
4	Sheet-metal nut; B 3.9	21 17 300		
5	Nozzle; $\varnothing$ 20 x $\varnothing$ 36 x 9	31 10 100		
6	Stuffing box for thermometer	32 01 030		
7	Seal; $\varnothing$ 14.2 x $\varnothing$ 20 x 2.0	27 09 036		
8	Hex nut; M 14 x 1 x 5	31 25 002		
9	Thermometer; 58°C; measuring lead length 2000	32 01 035		Tank; up to mach.-no.: 392 021
9.1	Thermometer seal	32 01 039		
10	Thermometer; 85°C; measuring lead length 2000	32 01 036		Boiler; up to mach.-Nr.: 392 021
10.1	Thermometer seal	32 01 039		
11	Lamp; white; 230V	31 08 064		Programme cycle
12	Push-button; white; 250V	31 24 129		Manual rinsing
13	Push-button, white	31 24 128		Manual washing
14	Push-button; white; 250V	31 24 166		Programme II
15	Push-button; white; 250V	31 24 165		Programme I
16	Push-button switch; "W" green 250 V	31 24 185		On-Off
17	Sheet-metal screw, B 3.9 x 16	20 20 300		
18	Switch cover	61002700		up to mach.-no.: 392 021
	Switch cover; 7-hole	61005654		from mach.-no.: 392 022

-35-  
GS 72

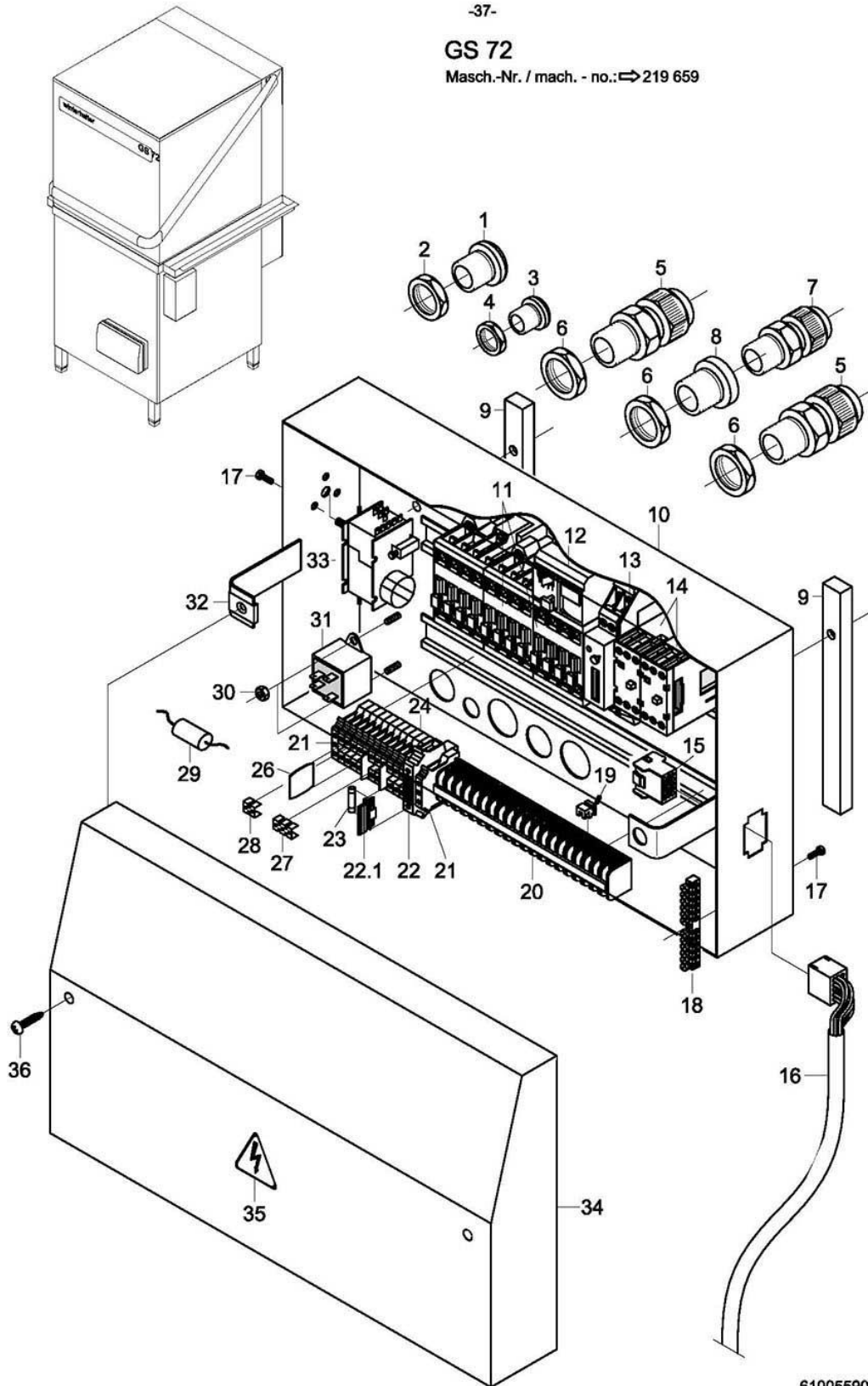


61005589-00



# GS 72

Masch.-Nr. / mach. - no.: ⇨ 219 659



## GS 72

### Electrical parts III

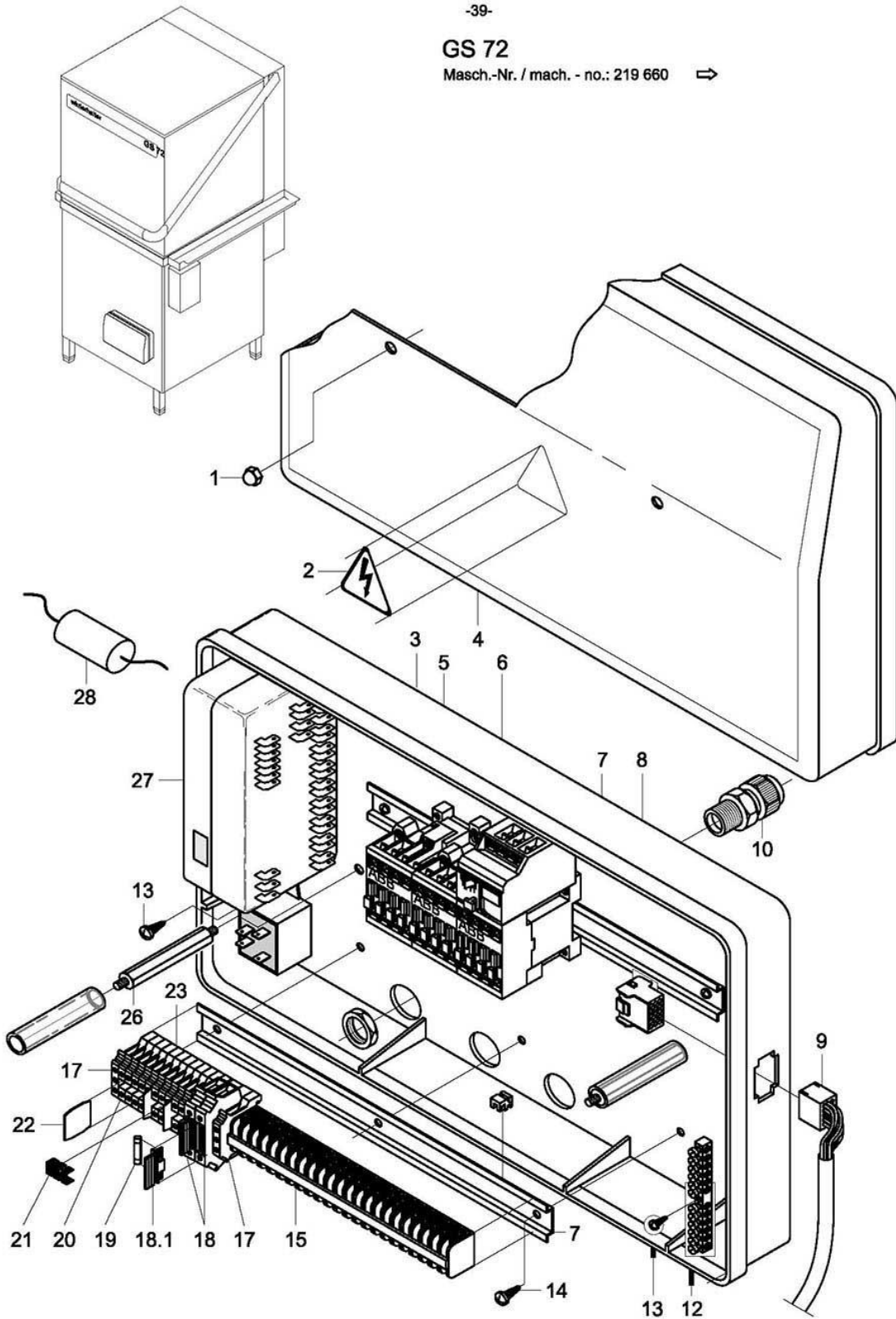
Machine-No: ⇨ 219 659

Item	Designation	Part-No.	Pc.	Notes
1	Screw cap; PG 16	31 10 025		
2	Hex nut; PG 16	31 10 110		
3	Screw cap; PG 9	31 10 021		
4	Hex nut; PG 9	31 10 043		
5	Cable gland PG 21 with strain relief device	31 10 070		
6	Hex nut; PG 21	31 10 071		
7	Cable gland; PG 16 with strain relief device	31 10 118		
8	Reducing ring; PG 21/16	31 10 090		
9	Spacer strip for switchbox	61002403	2	
10	Switchbox base	55 19 098		
11	Contact; A16; 220-255V; 50/60Hz	31 04 162		
	Contact; A16; 200V; 50/60Hz	31 04 163		Japan
12	Overcurrent relay electronic; 5.7 - 18.9A	31 04 193		
13	Passing make contact relay; 1 - 10s; 220V	31 04 120		
14	Contact relay; 220-240 V; 50/60 Hz; CA2-SK11	31 04 114		
15	Wire assortment; clutch	61003428		
16	Cable harness; with plug	61003426		
17	Oval-head screw; M4 x 10	20 10 302		
18	PE conductor terminal	31 09 067		
19	Straps	31 09 012		
20	Band terminal; 23-piece	55 19 065		
21	Universal terminal; green/yellow USLKG 4	31 09 064		
22	Universal fuse terminal; UK-Si	31 09 063		incl. item 22.1
22.1	Fused plug	31 09 072		
23	Fine-wire fuse; 250V; 6.3A	31 11 043		
24	Universal terminal; grey UK 10	31 09 057		
25	Universal terminal; blue UK 5	31 09 050		
26	Isolating disk TS-K	31 09 066		
27	Fixed bridge; 3-pin; FB 10-8	31 09 138		
28	Fixed bridge; 2-pin; FB 10-8	31 09 128		
29	Radio interf. suppr. capacitor; 33000pF; 250V	31 13 073		
30	Hex nut; M 4 self-locking	21 05 300		
31	Radio interf. suppr. capacitor; 3 x (0.47µF + 1MΩ)	31 13 072		
32	Sheet-metal nut; B 3.9	21 17 300		
33	Program switch	31 05 119		
34	Switch box cover	61002408		
35	Sign; high-voltage flash	28 03 009		
36	Sheet-metal screw, B 3.9 x 16	20 20 300		



# GS 72

Masch.-Nr. / mach. - no.: 219 660 ⇨



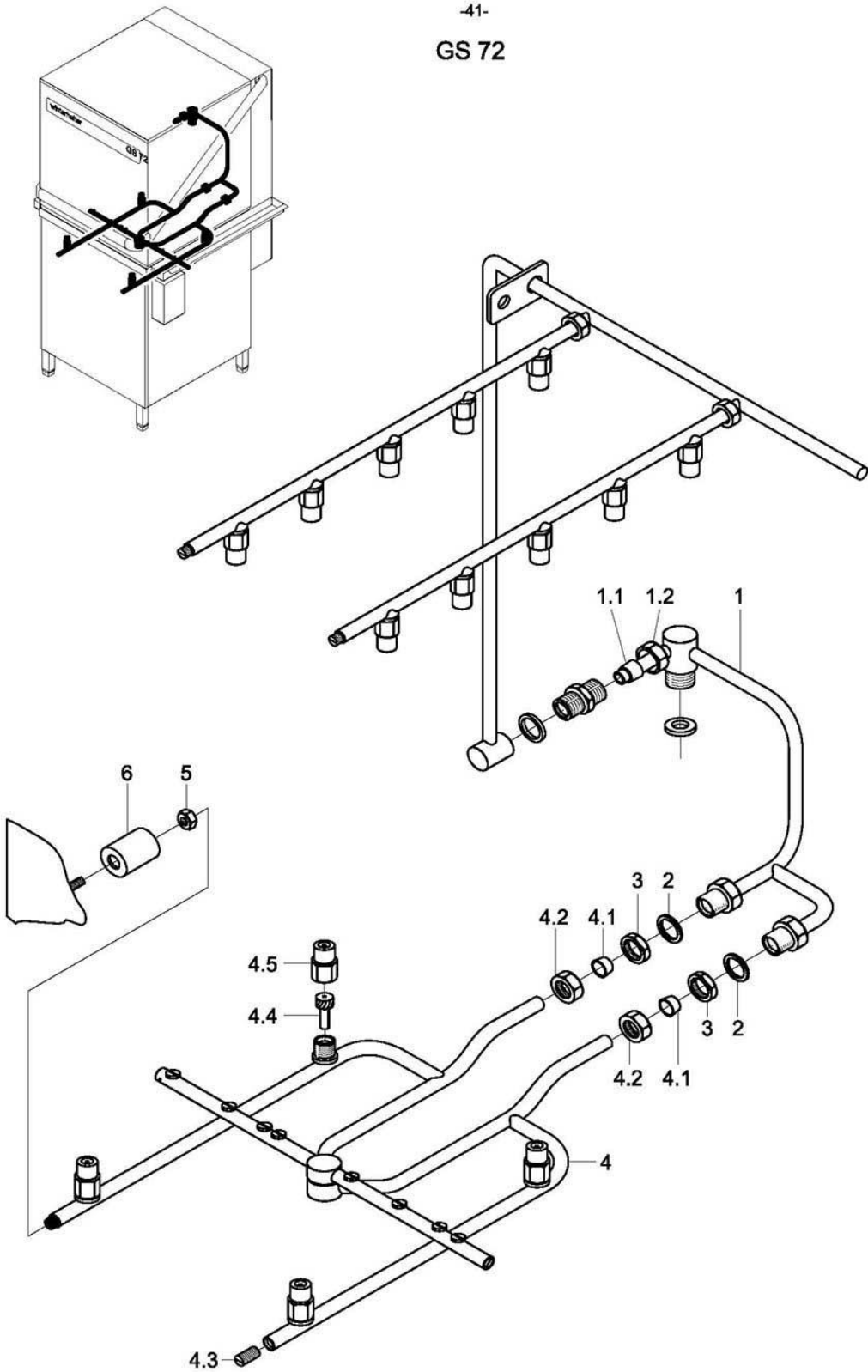
## GS 72

### Electrical parts III

Machine-No: 219 660 ⇔

Item	Designation	Part-No.	Pc.	Notes
1	Cap nut	21 10 204		
2	Sign; high-voltage flash	28 03 009		
3	Bottom part of relay box	61002617		
4	Switch box cover	61002408		
5	Contact; A9; 220-255V; 50/60Hz	31 04 161		arrangement can vary by heating power
	Contact; A16; 220-255V; 50/60Hz	31 04 162		
	Contact; A16; 200V; 50/60Hz	31 04 163		Japan
6	Overcurrent relay electronic; 5.7 - 18.9A	31 04 193		
7	Snap-on rail; 7,5 x 35 x 315	61002397	2	
8	Wire assortment; clutch	61003428		up to mach.-no.: 392 021
	Wire assortment; clutch	61003883		from mach.-no.: 392 022
9	Cable harness; with plug	61003426		up to mach.-no.: 392 021
	Cable harness with connector	61004393		from mach.-no.: 392 022
10	Cable gland PG 21 with strain relief device	31 10 070	3	
11	Hex nut; PG 21	31 10 071	3	
12	Terminal block; PE KLB 12/SEV	31 09 094		
13	PT screw; KB 30 x 14	20 17 002		
14	PT screw; KB 50 x 8	20 17 001		
15	Strip terminal BK 4 - FS/FS	31 09 025	23	
16	Straps	31 09 012	4	
17	Universal terminal; USLKG 10 gn-ye	31 09 059	2	
18	Universal fuse terminal; UK-Si	31 09 063	2	incl. item 18.1
18.1	Fused plug	31 09 072	2	
19	Fine-wire fuse; 250V; 6.3A	31 11 043	4	incl. 2 pc. reserve
20	Universal terminal; UK 10 blue	31 09 058	2	
21	Fixed bridge; 3-pin; FB 10-8	31 09 138	3	
	Fixed bridge; 2-pin; FB 10-8	31 09 128		
22	Isolating disk TS-K	31 09 066	3	
23	Universal terminal; grey UK 10	31 09 057	9	
n.p.	Universal terminal; grey UK 35	31 09 172		Japan
24	Radio interf. suppr. capacitor; 3 x (0.47µF + 1MΩ)	31 13 072		with Y-voltage
26	Stud; M 6; width across flats 10 x 126	61003313	2	
n.p.	Hex nut; M 6 self-locking	21 05 304		
27	Electr. Programme switch; EPS 1.1; 230V	31 05 131		
	Electr. Programme switch; EPS 1.1; 200V; 240V	31 05 132		
28	RC element; 0.27µF; 250V	61002141		
n.p.	Zuleitungskabel			on request
n.p.	Cable harness; three-phase current	61002150		up to mach.-no.: 392 021
n.p.	Cable harness; three-phase current	61003884		from mach.-no.: 392 022
n.p.	Cable harness; control	61003427		up to mach.-no.: 392 021
n.p.	Cable harness; control	61003885		from mach.-no.: 392 022
n.p.	Wire assortment; cpl. GS 72	61002154		
n.p.	Wire assortment; control	61003429		up to mach.-no.: 392 021
n.p.	Wire assortment; control	61004468		from mach.-no.: 392 022
n.p.	Wire assortment; EZEO	61004122		up to mach.-no.: 392 021
n.p.	Wire assortment; EZEO	61004118		from mach.-no.: 392 022

-41-  
GS 72



**GS 72**

Glass washing kit (option)

Item	Designation	Part-No.	Pc.	Notes
1	Rinse manifold; external cpl.	80001900		incl. items 1.1, 1.2
1.1	Cutting ring; ø 15 x 10; nom. dia. 12	29 07 300		
1.2	Cap nut; G 1/2" x ø 12.2; width across flats 24	29 07 201		
2	Seal; ø 17 x ø 24 x 2.0	27 09 009	2	
3	Hex nut; G 3/8" x 5.5	30 09 200	2	
4	Rinse system; bottom cpl.	61005572		incl. items 4.1 - 4.5
4.1	Clamping ring; ø 10.2	29 07 500	2	
4.2	Cap nut; G 3/8" x ø 10.2	29 07 200	2	
4.3	Grub screw; M 9 x 15	20 30 504	2	
4.4	Nozzle swirl device; ø 8 x 18.8	65002764	4	
4.5	Nozzle cap; ø 14.6 x 21	65002765	4	
5	Hex nut; M 4 self-locking	21 05 300		
6	Bush; ø 28 x 30	61002343	2	

